

# ROAD INDEX

<b>A</b>	APPLE BLOSSOM LANE AVON LANE	B3 B5	<b>I</b>		<b>S</b>	SANDGATE DRIVE SEMINARY LANE SHADOW HILL TRAIL SHADY LANE SHARP LANE SHERMAN ROAD SHERWOOD TRAIL SHILOH DRIVE SPERRY ROAD SPRINGBLOSSOM SPRING ROAD SPRUCE DRIVE STEELWOOD LANE STOCKBRIDGE DRIVE STORYBOOK LANE STRATFORD TRAIL SUMMERS ROAD SURREY STACY LANE	F3 F4 F3 C6 D1 A4-F3 B2 D3 F6 B5 B2 D2 A5 B4 C3 B6 C3 B3 A3				
<b>B</b>	BARDWELL DRIVE BARRINGTON LANE BENTBROOK DRIVE BIRCHWOOD DRIVE BIRDLAND TRAIL BLACKBERRY LANE BROOKLANE ROAD BUCKEYE DRIVE	D3 B4 B4 C5 B5 E2 C4	<b>J</b>		<b>K</b>	KAREN ROAD KENYON DRIVE KIM DRIVE KINGSWAY DRIVE KIRKWOOD DRIVE KRISTINE DRIVE	F5 F5 F5 B4, B5 D1 D2				
<b>C</b>	CAMELOT DRIVE CARMICHAEL DRIVE CAVES ROAD CEDAR ACRES DRIVE CEDARCREST CEDAR ROAD CHAPIN STREET CHERRY LANE CHESTER BROOK CHILLICOTHE ROAD CLEARVIEW ROAD COTTRELL DRIVE COUNTY LINE ROAD CRANWOOD DRIVE CAMBRIDGE DRIVE CHALET DRIVE CLIFFVIEW LANE (PVT.)	D5 D6 B1-C6 C6 B5 A5-E5 B2 C5 C1-D6 C3 D5 A1-A6	<b>L</b>	LAKEWOOD DRIVE LAUREL ROAD LINCOLN DRIVE LYMAN ROAD LYNN DRIVE LAKE FOREST DRIVE LEGENO CREEK DR.	E6 B3 D4 C2 C1 F3	<b>M</b>	MANCHESTER DRIVE MAPLE DRIVE MAPLE GROVE MAPLELEAF TRAIL MARILYN ROAD MARTINGALE MAYFIELD ROAD MAYVIEW LANE MEADOWRIDGE DRIVE MERRIE LANE MORNING GLORY TRAIL MULBERRY ROAD	B4 C4 B6 F3 D5 B3 A4-E4 A4 C3 C3 A5 A2-F2	<b>T</b>	TATTERSALL	B3
<b>D</b>	DEVON LANE DOROTHY ROAD DRURY LANE DEANS GATE (PVT.) DEERHAVEN DRIVE	B5 C5 B5 A5 C2	<b>N</b>	NEW MARKET NORTON DRIVE NORTH SHILOH DR. NORTHWARD PONTE DR.	B3 C3 B1 C3	<b>U</b>			<b>V</b>	VALLEY VIEW DRIVE VINCENT DRIVE	C4 E5
<b>E</b>	EAST HILL DRIVE EDDYWOOD LANE EVERGREEN DRIVE EAST SHILOH DR.	B3 C3 B1 C3	<b>O</b>	OAK HILL DRIVE OLD MILL ROAD OPALOCKA DRIVE OXFORD LANE OAKWOOD LANE	B3 C3 D3 D4	<b>W</b>	WALNUT RIDGE ROAD WARD DRIVE WARWICK LANE WEDGEFIELD LANE WEDGEWOOD DRIVE WELLSWOOD TRAIL WESTCHESTER TRAIL WEST GAUGA TRAIL WEST SHILOH DRIVE WEST WALNUT RIDGE ROAD WHITE PINE WHITING DRIVE WILLOW BROOK DRIVE WILLOW HILL DRIVE WILSON MILLS ROAD WINCHESTER VALLERY WINDING BROOK LANE WOODCHUCK HOLLOW WOODCREST LANE WOODLANDS TRAIL WOODSIDE DRIVE WOODSIDE DRIVE SOUTH WYANDOT ROAD	B1 C4 B5 C3-C4 C3 B5 A5 D3 B1 B3 C2 A3-F3 D2 F3 B5 B5 D4 D5 E5			
<b>F</b>	FAIRFIELD TRAIL FERRY ROAD FOREST LANE FOXHAVEN DRIVE FOX RUN (PVT.) FOXMOORE TRAIL	B5 A2 E5 C2 B3 B5-B6	<b>P</b>	PADDOCK PARKER DRIVE PARKVIEW DRIVE PEACH TREE DRIVE PEAR TREE DRIVE PELHAM PINWOOD DRIVE PRESCOTT DRIVE PUDDINGSTONE DRIVE PINE ACRES L.N.	E1 B6 C6 B5	<b>X</b>			<b>Y</b>		
<b>G</b>	GEM ROAD GLEN HILL GREEN DRIVE GREENFIELD TRAIL	C4 F1-F5 D4 F3 C6 C6 A5 A2 D4	<b>Q</b>			<b>Z</b>					
<b>H</b>	HAROLD DRIVE HEATH ROAD HERRICK DRIVE HERVIE ROAD HICKORY STREET HICKORY STREET SOUTH HILLCREST LANE HILLENDALE ROAD HOVEY DRIVE		<b>R</b>	RANCH DRIVE RED OAK DRIVE RESERVE LANE RUST DRIVE (PVT.)							

- ① CHESTER ELEMENTARY SCHOOL
- ⑧ CEMETERY
- ② WEST GAUGA HIGH SCHOOL
- ⑨ CEMETERY
- ③ HAWKEN SCHOOL FOR BOYS
- ⑩ CHESTER TOWNSHIP CEM.
- ④ COMMUNITY CHURCH
- ⑪ ROLLING GREEN MEM. CEM.
- ⑤ CHRIST PRESBYTERIAN CH.
- ⑫ CHESTER TOWN HALL
- ⑥ BAPTIST CHURCH
- ⑬ UNITED STATES POST OFFICE
- ⑦ METHODIST CHURCH
- ⑭ CHESTER VOL. FIRE DEPT.
- ⑮ ST. ANSLEM CHURCH-SCHOOL
- ⑯ NORTH VIEW ELEM. SCHOOL

**\* CHESTER TOWNSHIP \***

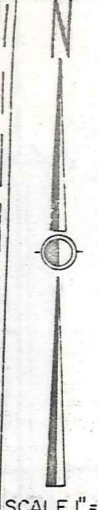
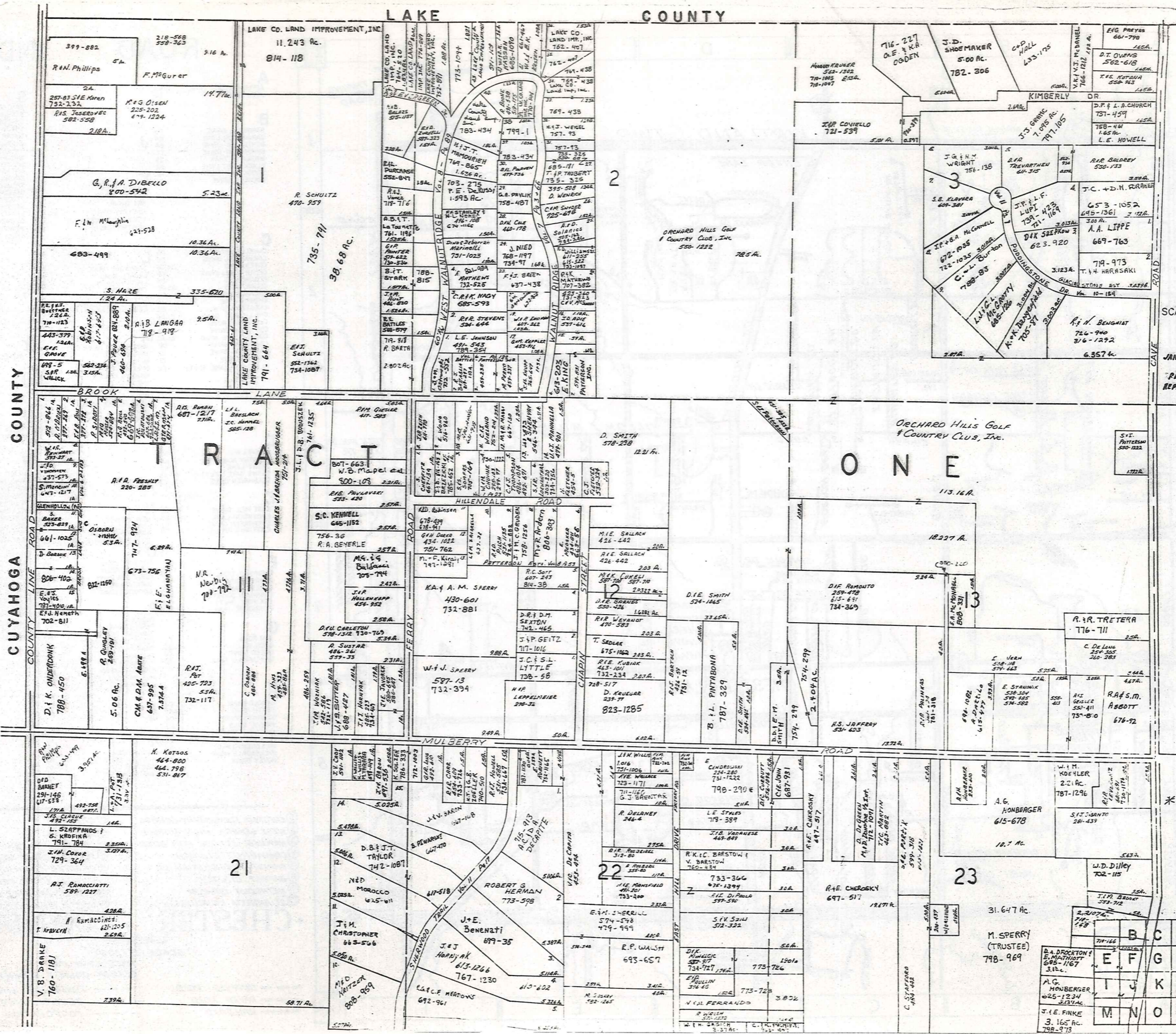
SCALE: 1" = 2000'

ROBERT L. PHILLIPS,  
GEAUGA COUNTY ENGINEER

--- UNPAVED ROAD	--- TOWNSHIP LINE
==== PAVED ROAD	--- COUNTY LINE
++++ RAILROAD	--- CORPORATION LINE

LAKE COUNTY

CUYAHOGA COUNTY

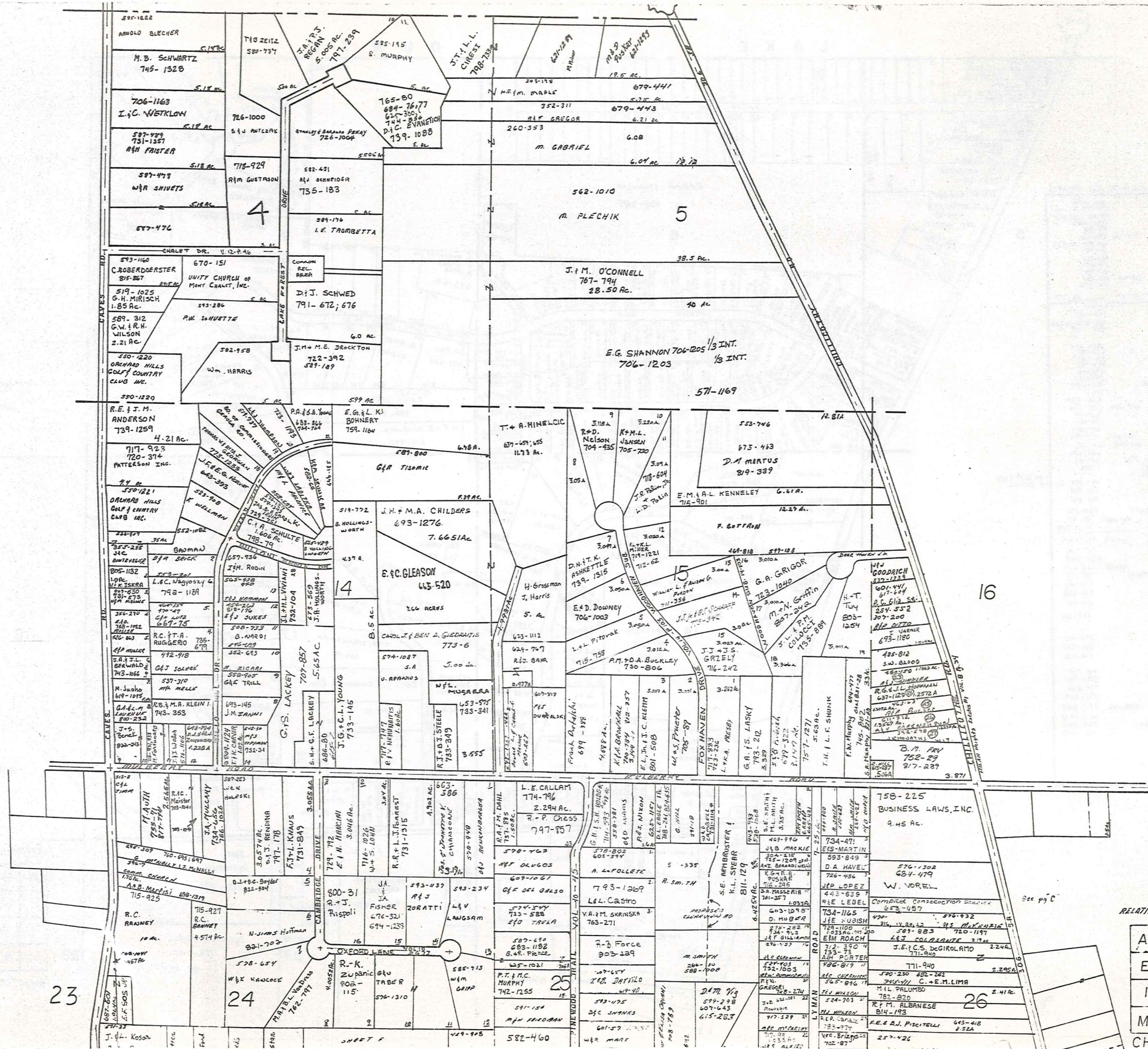


SCALE 1"=300'

JANUARY, 1969  
RELATIVE REPRESENTATION

\* Inadequate description

	B	C	D
E	F	G	H
I	J	K	L
M	N	O	P



SCALE 1"=300'  
JANUARY 1, 1889

\* Inadequate description

RELATIVE REPRESENTATION

A	B	C	D
E	F	G	H
I	J	K	L
M	N	O	P

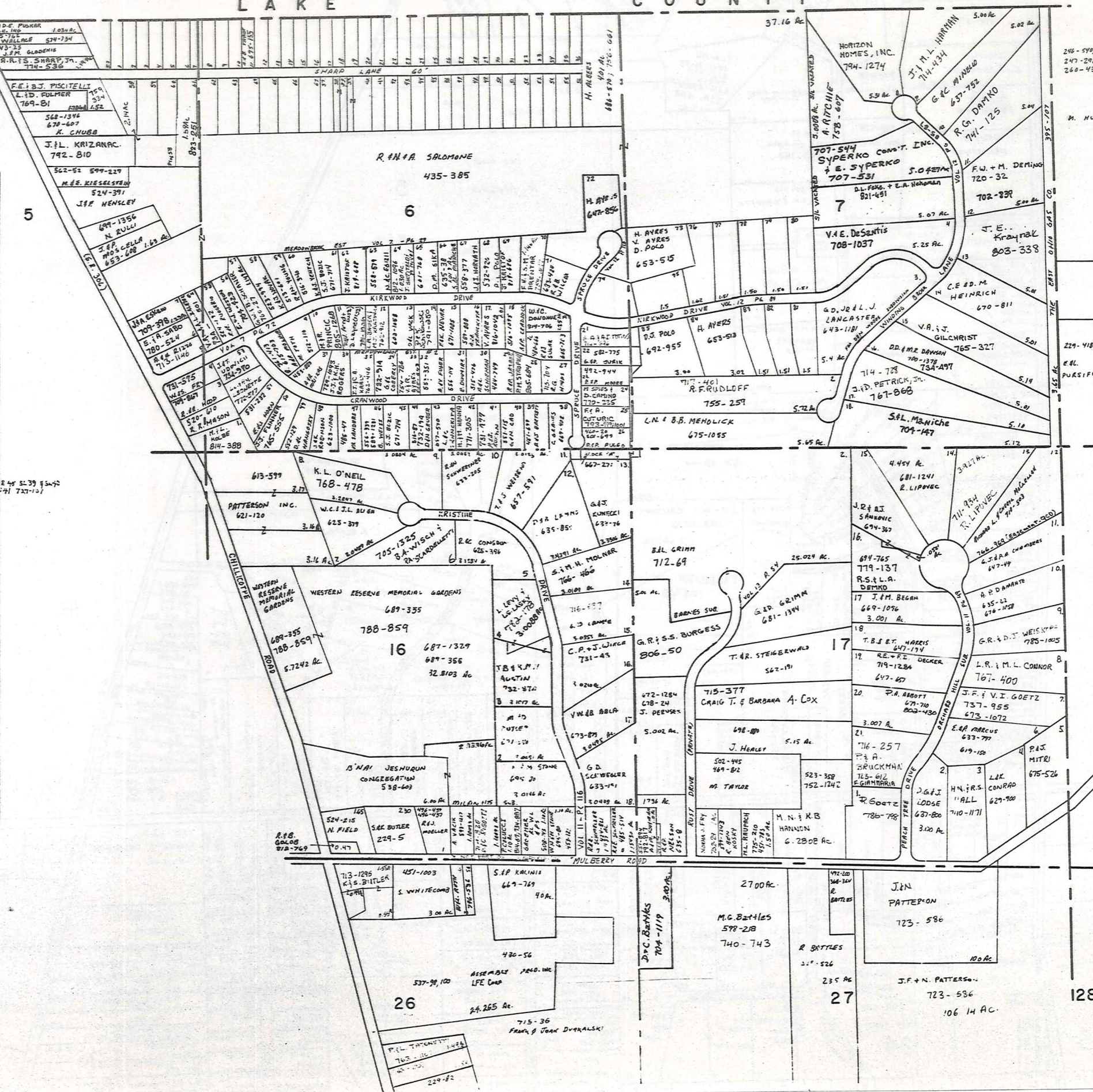
CHESTER B

LAKE COUNTY

306

E SHARP SURVEY VOL. 6-PC 103 (PLATS)

1.	S. SERADICK	903-1118
2.	D. L. CICHIELLA	243-204 704-1076
3.	SAVO	409-477 429-714
4.	A. A. DI PAOLO	731-1002
5.	R. L. MUDER	473-776
6.	F. W. ROBARCK et al.	714-591 396-220
7.	R. J. GLADWIN	420-256 711-335
8.	K. NERAK	281-94
9.	V. ZANINZ	635-245
10.	B. W. WHITNEY	538-711
11.	J. H. ZIMMERT	521-86
12.	J. T. SIKORA	551-243
13.	J. M. SMITH	550-377
14.	J. D. TILGROW	805-221
15.	A. B. DEBELLA	67-237
16.	A. M. L. DIMARCO	752-187
17.	A. C. T. G. BREZINA	284-217 743-639
18.	A. P. O. ORBAN	822-1149
19.	J. T. WARGELIN	780-464
20.	W. J. COOPER	574-126
21.	J. P. DUMAS	63-1-293
22.	J. D. BOZIC	484-501
23.	"	278-176
24.	H. E. NEIS WANDER	484-783
25.	"	733-697
26.	D. V. L. R. CUSICK	736-1
27.	A. P. RUZIC	732-224
28.	C. E. HECKMAN	661-1206; 756-236
29.	G. J. M. REESE	647-770
30.	A. M. REESE	84-275
31.	M. P. HISH	447-1202
32.	J. A. K. M. RONDO	740-1150; 682-1202
33.	T. A. MAFUL	667-515; 629-396
34.	"	675-686
35.	D. WEY	W-20 #38 519-80
36.	D. CORCELLI (E-60)	783-1
37.	"	"
38.	R. L. HLEBOK	491-800 711-727-101
39.	H. M. ENDRULAS	454-508
40.	"	454-510
41.	H. J. G. J. RACHENSKI	733-556
42.	S. WHITESAVAGE	716-1150 284-407
43.	J. DeLiNo	797-979
44.	D. A. KRÄMER	704-493 521-1014
45.	G. W. S. L. STUHF	716-360
46.	G. E. L. M. COX	800-1258
47.	G. L. COX	784-476 625-423
48.	G. D. KLEINSORGE & J. T. MOORE	741-163
49.	K. P. GREGOR	532-1218
50.	R. P. SHOLTIS	733-448
51.	M. K. GRASSI	619-54
52.	R. K. SHISHA	557-366
53.	"	"
54.	C. K. HUNT	395-412
55.	R. G. DeFolice	785-501
56.	R. C. CARLO	512-472
57.	"	"
58.	S. L. SHARP	735-751
59.	A. G. MULLIKEN	823-261
60.	R. G. M. SHARP	774-540
61.	E. S. R. KIDDER	774-542
62.	"	"
63.	L. SHARP	805-163; 774-538
64.	L. P. KOVACH	617-1075
65.	J. A. D. L. BEAVORY	733-502
66.	R. T. KECLOVIC	796-1253
67.	"	"



SCALE 1" = 300'  
JAN. 1, 1989

RELATIVE REPRESENTATION

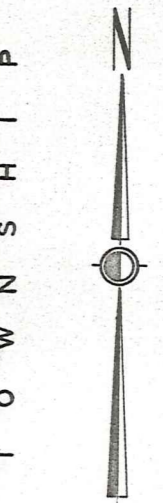
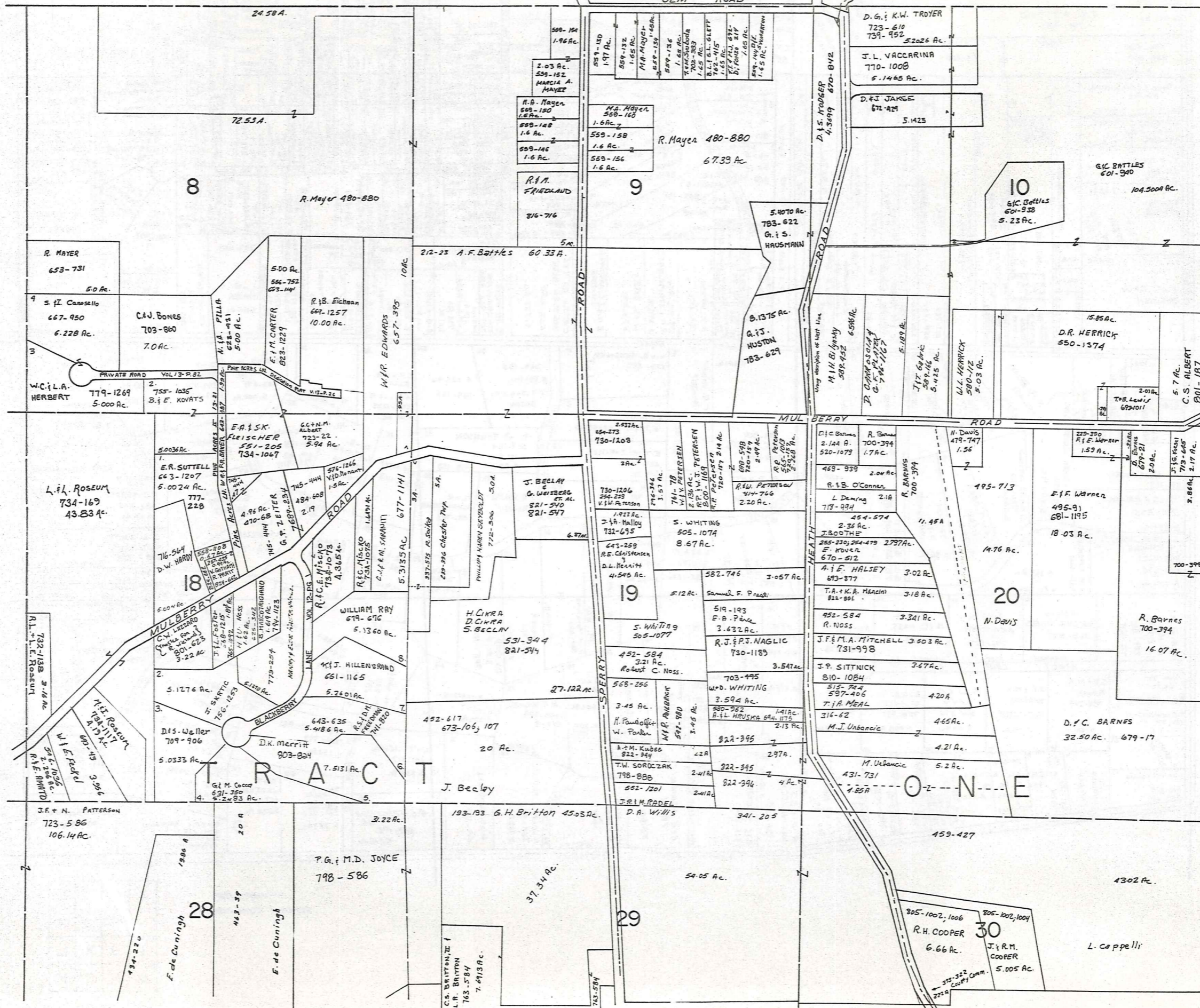
A	B	C	D
E	F	G	H
I	J	K	L
M	N	O	P

CHESTER C

\* Inadequate description

L A K E G E M R O A D C O U N T Y

C H A R D O N T O W N S H I P



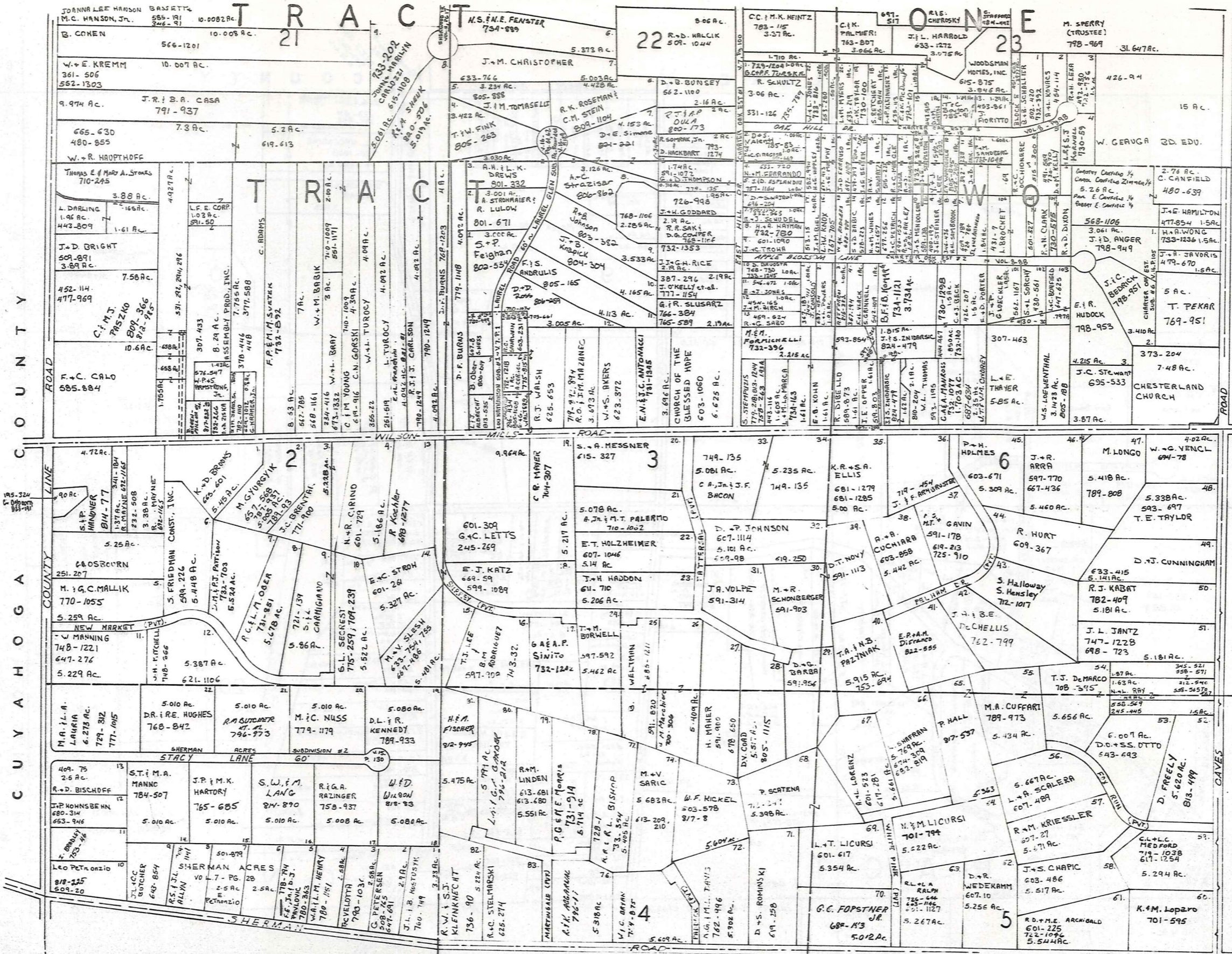
SCALE 1"=300'

\*Inadequate description

JANUARY 1, 1909  
RELATIVE REPRESENTATION

A	B	C
E	F	G
I	J	K
M	N	O

CHESTER D



ONE 71-25-71-27  
S. L. VOL. 7-P. 1  
LOW MATHANSONS  
S. L. S. B.  
VACATED 5-24-84

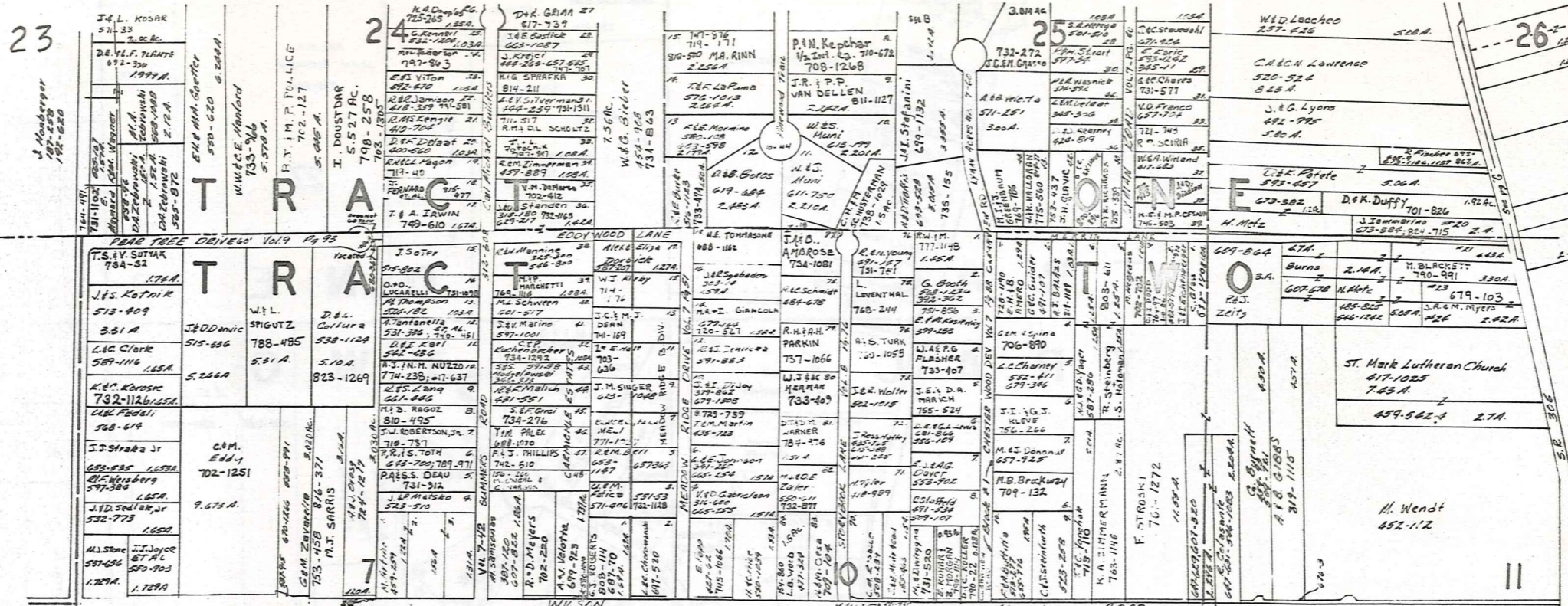
SCALE 1"=300'

\* Made 1/13  
dec 1977

JANUARY 1, 1979  
RELATIVE REPRESENTATION

A	B	C	D
	F	G	H
I	J	K	L
M	N	O	P

CHESTER E



Board of County Commissioners of Georgia County

SCALE 1" = 300'

\* Inadequate description

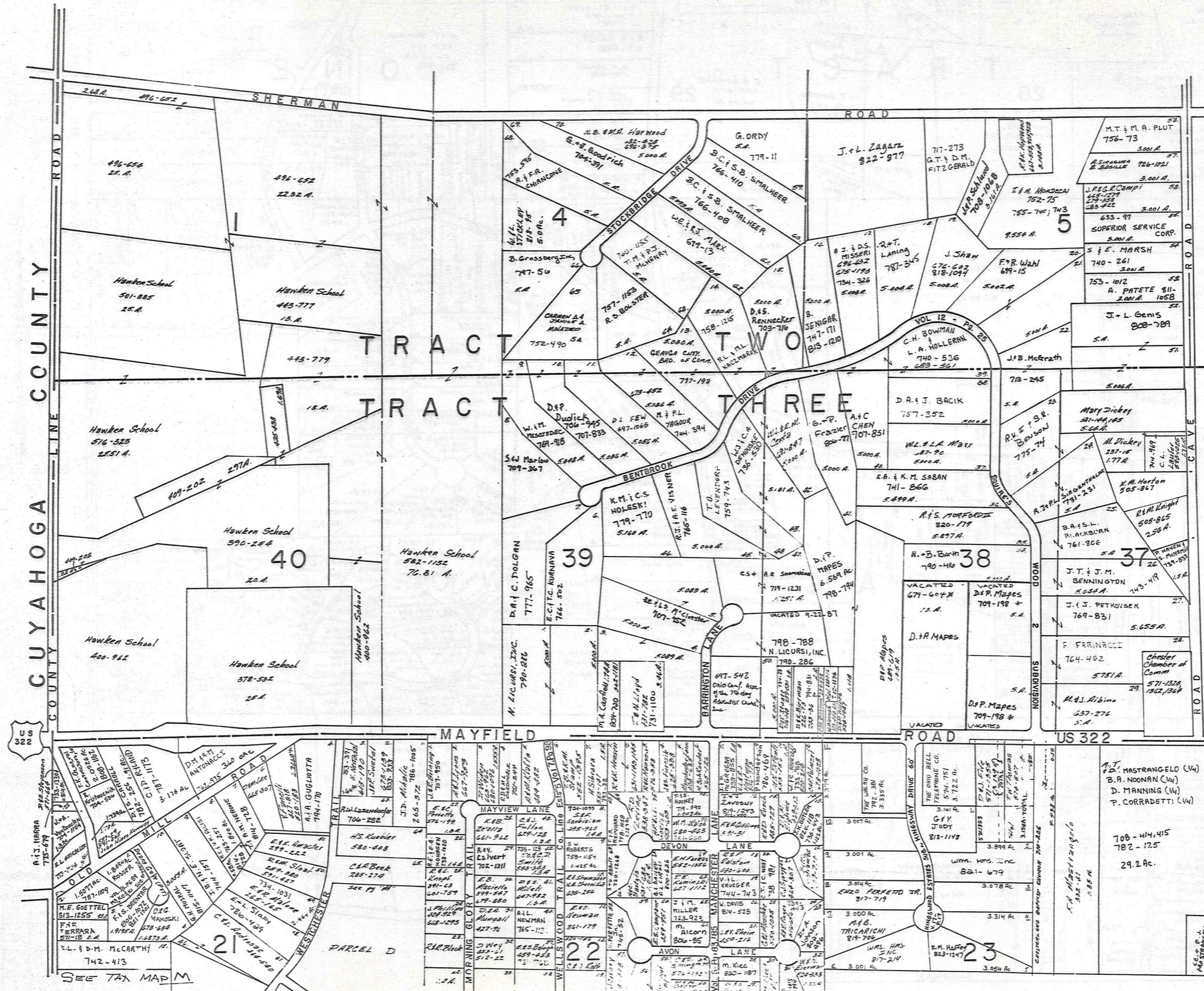
- 199-29-66, 230 S.E. Whittington 7.67A
- 27-286
- 12. 791-288 M.D. Joyce
- 13. 528-700 G.L. Eberst
- 14. 520-101 A.L. Douglas
- 15. 484-524 R.G. Barnes
- 16. 249 Gardner & Co. 731-792
- 17. D.L. Perry 281-106
- 18. 210-41 U.L. Perry
- 19. 253-123 C.S. Whiting
- 20. 257-132 C. Whiting
- 21. 220A C.A.D. Paulin 733-1257
- 22. 556-271 J.A.H.L. Perry
- 23. 341-571 M.H. Logan
- 24. 351-447 G.H. Fiac
- 25. J.H.L. Perry 555-1216
- 26. J.E.R.E. DUBASH 734-91
- 27. N.E. Saly 704-429
- 28. N.E. Saly
- 29. S.A.L. J.E.E. Abbott 730-1304
- 30. S.A.L. D.J. Kraft 766-528
- 31. F.O.S.A. GARCIA 734-1161
- 32. G.L. GARCIA 675-524

JANUARY, 1929  
RELATIVE REPRESENTATION

A	B	C	D
E	F	G	H
I	J	K	L
M	N	O	P







SCALE 1"=300

JANUARY 1, 1989

A	B	C	D
E	F	G	H
J	K	L	
M	N	O	P

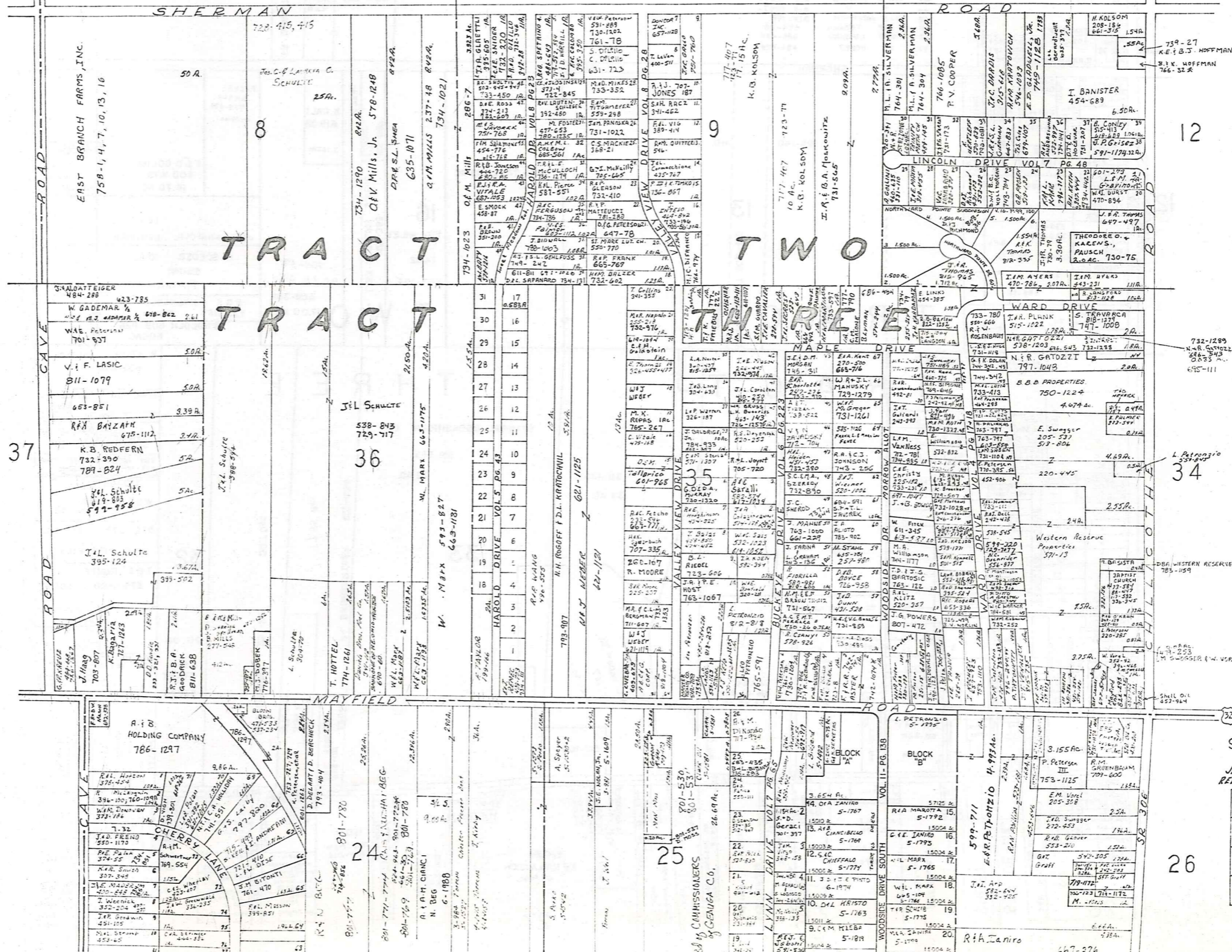
CHESTER I

RELATIVE REPRESENTATION

\* Inadequate description

CHESTER

HAROLD DRIVE		ALLOT. VOL. 5 PG. 43	
1	J. F. FORD	721-9	M. P. PETERSEN
2	J. P. MATHEW	754-918	W. H. HOFFMAN
3	O. B. GASSO	647-527	W. H. HOFFMAN
4	N. B. PETERSEN	504-290	W. H. HOFFMAN
5	J. DEMSKI	597-1240	J. P. SAPPANARO
6	H. M. PLATEK	791-1045	A. E. HORN
7	H. A. C. C. C. C.	473-338	C. J. J. J.
8	E. L. VAN TOR	741-1184	M. L. L. L. L.
9	E. D. NEWTON	798-1244	J. P. SAPPANARO
10	J. P. PETERSEN	504-290	E. D. MARCHAND
11	J. P. PETERSEN	504-290	A. M. M. M.
12	J. P. PETERSEN	504-290	A. M. M. M.
13	J. P. PETERSEN	504-290	A. M. M. M.
14	J. P. PETERSEN	504-290	A. M. M. M.
15	J. P. PETERSEN	504-290	A. M. M. M.
16	J. P. PETERSEN	504-290	A. M. M. M.
17	J. P. PETERSEN	504-290	A. M. M. M.
18	J. P. PETERSEN	504-290	A. M. M. M.
19	J. P. PETERSEN	504-290	A. M. M. M.
20	J. P. PETERSEN	504-290	A. M. M. M.



SCALE 1"=300

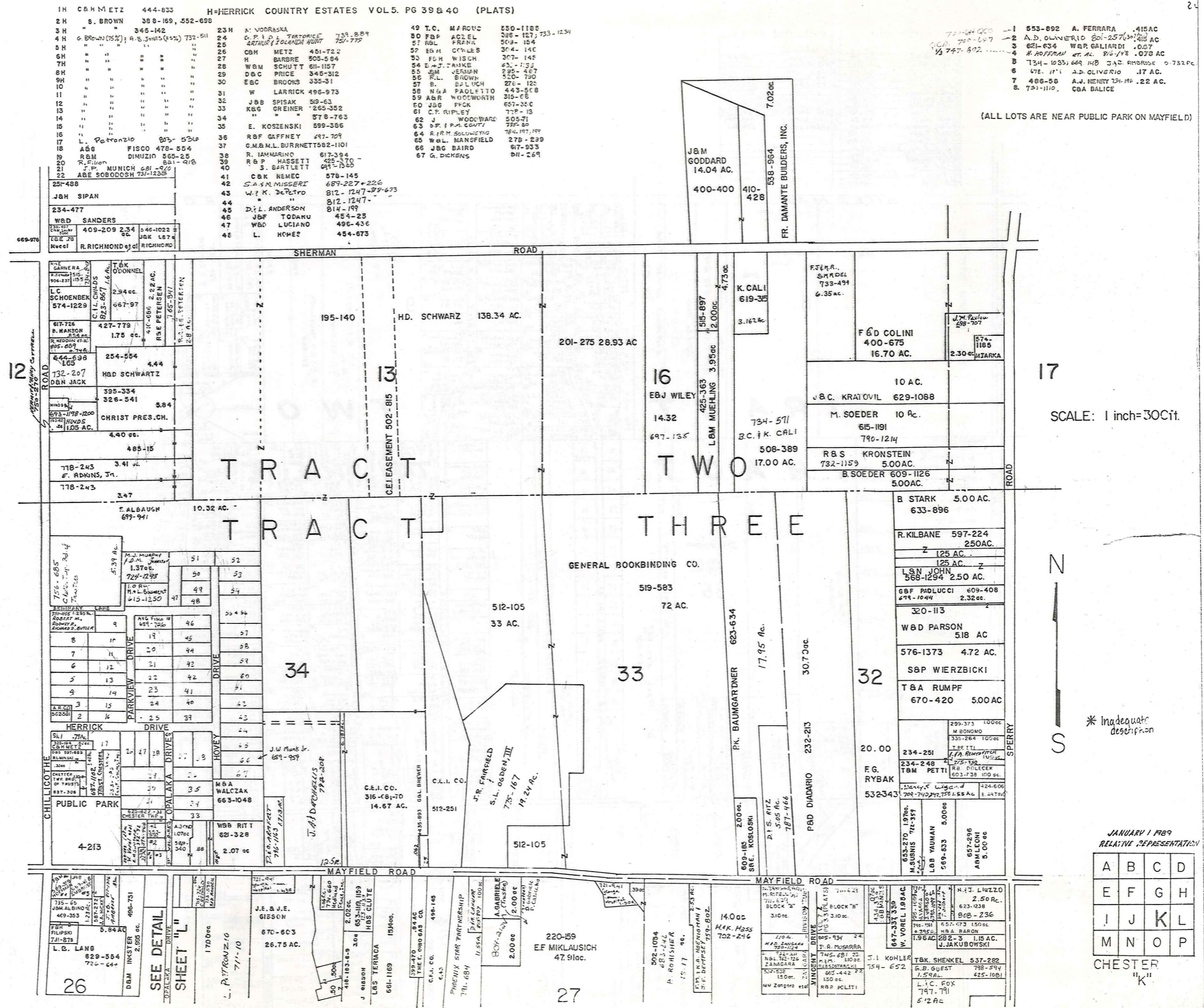
JANUARY 1, 1989  
RELATIVE REPRESENTATION

A	B	C	D
E	F	G	H
I	J	K	L
M	N	O	P

CHESTER J

- 1 553-892 A. FERRARA .415 AC
- 2 A.D. OLIVERIO 801-2573 .415 AC
- 3 621-634 W&R GALLIARDI .067
- 4 H. HOFFMAN et. al. 816-178 .070 AC
- 5 734-1035; 664 148 J&C ARMOR 0.732 AC
- 6 478-1111 A.D. OLIVERIO .17 AC
- 7 466-58 A.J. HENRY 134-196 .22 AC
- 8 731-1110 C&A BALICE

(ALL LOTS ARE NEAR PUBLIC PARK ON MAYFIELD)



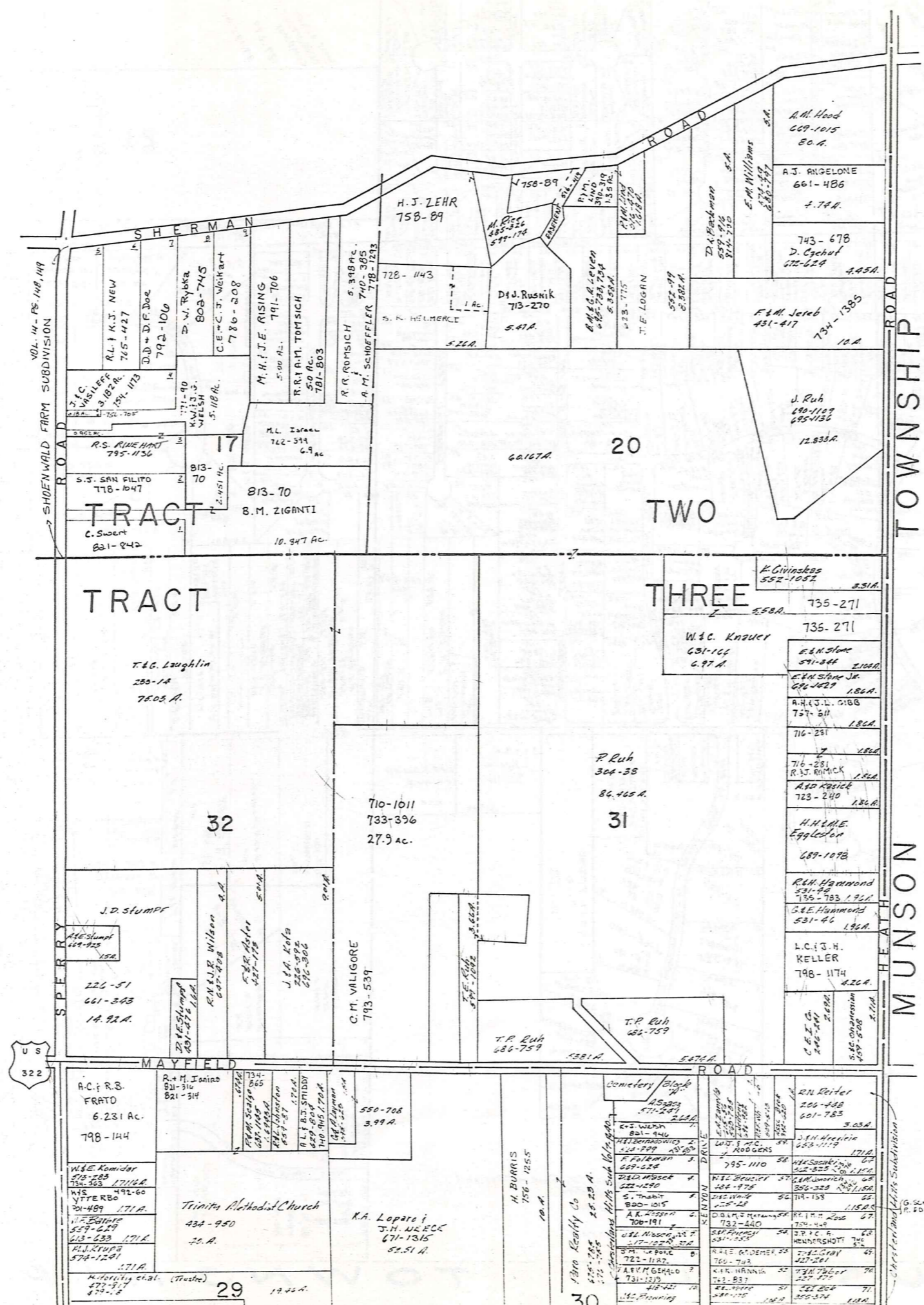
SCALE: 1 inch = 300 ft.

\* Inadequate description

JANUARY 1989  
RELATIVE REPRESENTATION

A	B	C	D
E	F	G	H
I	J	K	L
M	N	O	P

CHESTER  
"K"



MAYFIELD ROAD US. 322

**MYRLIN HEIGHTS SUB.**

VOL. 3 Pt. 4 PLATS  
 SCALE 1" = 100'

1	20.25A	20.25A
2	20.25A	20.25A
3	20.25A	20.25A
4	20.25A	20.25A
5	20.25A	20.25A
6	20.25A	20.25A
7	20.25A	20.25A
8	20.25A	20.25A
9	20.25A	20.25A
10	20.25A	20.25A
11	20.25A	20.25A
12	20.25A	20.25A
13	20.25A	20.25A
14	20.25A	20.25A
15	20.25A	20.25A
16	20.25A	20.25A
17	20.25A	20.25A
18	20.25A	20.25A
19	20.25A	20.25A
20	20.25A	20.25A
21	20.25A	20.25A
22	20.25A	20.25A
23	20.25A	20.25A
24	20.25A	20.25A
25	20.25A	20.25A
26	20.25A	20.25A
27	20.25A	20.25A
28	20.25A	20.25A
29	20.25A	20.25A
30	20.25A	20.25A
31	20.25A	20.25A
32	20.25A	20.25A
33	20.25A	20.25A
34	20.25A	20.25A
35	20.25A	20.25A
36	20.25A	20.25A
37	20.25A	20.25A
38	20.25A	20.25A
39	20.25A	20.25A
40	20.25A	20.25A
41	20.25A	20.25A
42	20.25A	20.25A
43	20.25A	20.25A
44	20.25A	20.25A
45	20.25A	20.25A
46	20.25A	20.25A
47	20.25A	20.25A
48	20.25A	20.25A
49	20.25A	20.25A
50	20.25A	20.25A
51	20.25A	20.25A
52	20.25A	20.25A
53	20.25A	20.25A
54	20.25A	20.25A
55	20.25A	20.25A
56	20.25A	20.25A
57	20.25A	20.25A
58	20.25A	20.25A
59	20.25A	20.25A
60	20.25A	20.25A
61	20.25A	20.25A
62	20.25A	20.25A
63	20.25A	20.25A
64	20.25A	20.25A
65	20.25A	20.25A
66	20.25A	20.25A
67	20.25A	20.25A

SCALE 1" = 300'  
 JAN 1, 1983

CHESTERLAND HILLS SUB. DIV

1	316-174
2	JU PITTAN
3	DB A. BEIDASH
4	R.M. GREEN
5	R.B.C. WEIR
6	325-485
7	
8	
9	
10	
11	
12	
13	
14	
15	
16	
17	
18	
19	
20	
21	
22	
23	
24	
25	
26	
27	
28	
29	
30	
31	
32	
33	
34	
35	
36	
37	
38	
39	
40	
41	
42	
43	
44	
45	
46	
47	
48	
49	
50	
51	
52	
53	AGE. VENEN
54	341-600
55	
56	J.B.H. MOWERY
57	341-236, 342, 231
58	
59	
60	60R.J. QUITTER
61	316-217
62	61C.B. KUCLA
63	492-841
64	
65	
66	
67	

COTTREL DRIVE

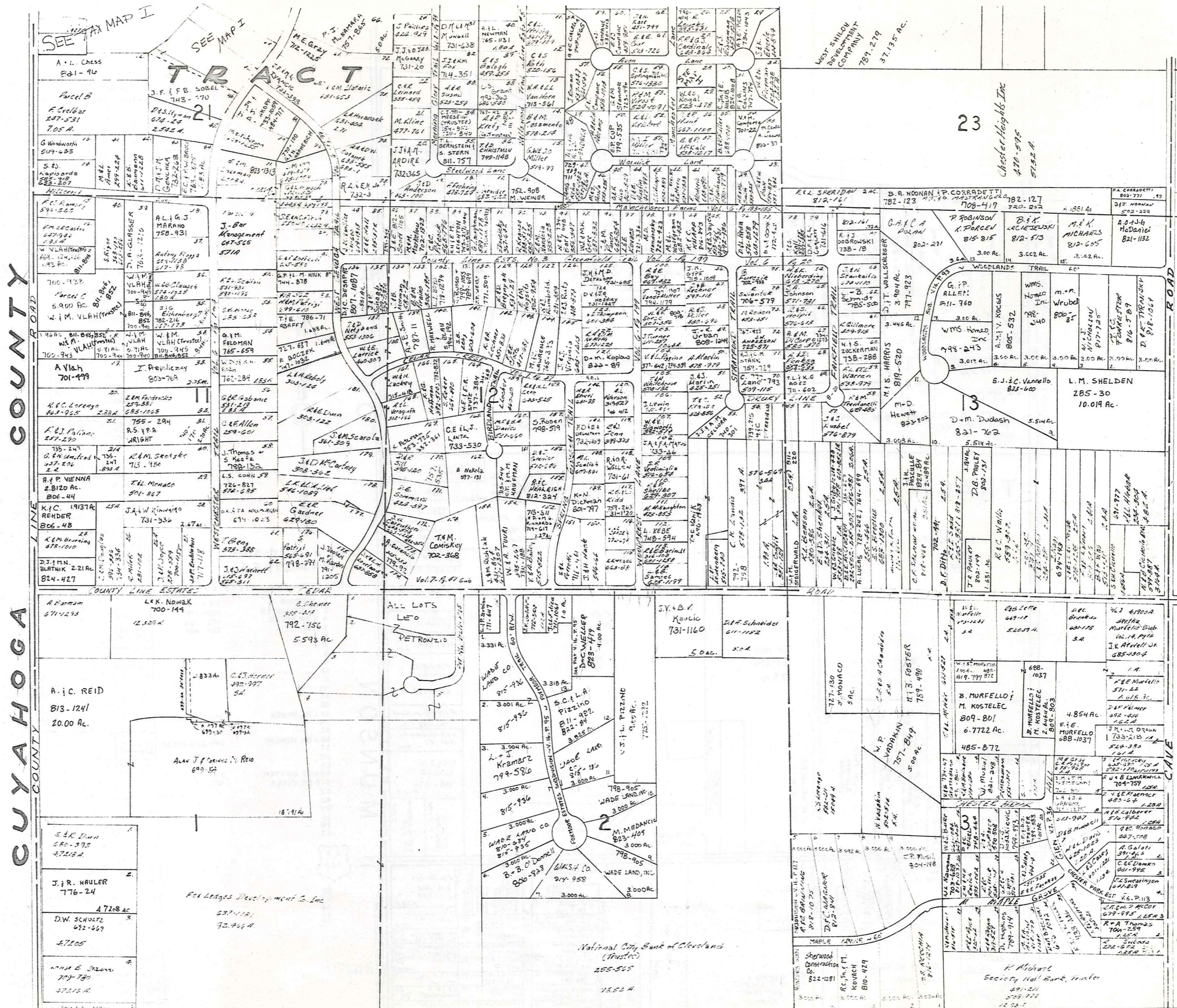
1	20.25A	20.25A
2	20.25A	20.25A
3	20.25A	20.25A
4	20.25A	20.25A
5	20.25A	20.25A
6	20.25A	20.25A
7	20.25A	20.25A
8	20.25A	20.25A
9	20.25A	20.25A
10	20.25A	20.25A
11	20.25A	20.25A
12	20.25A	20.25A
13	20.25A	20.25A
14	20.25A	20.25A
15	20.25A	20.25A
16	20.25A	20.25A
17	20.25A	20.25A
18	20.25A	20.25A
19	20.25A	20.25A
20	20.25A	20.25A
21	20.25A	20.25A
22	20.25A	20.25A
23	20.25A	20.25A
24	20.25A	20.25A
25	20.25A	20.25A
26	20.25A	20.25A
27	20.25A	20.25A
28	20.25A	20.25A
29	20.25A	20.25A
30	20.25A	20.25A
31	20.25A	20.25A
32	20.25A	20.25A
33	20.25A	20.25A
34	20.25A	20.25A
35	20.25A	20.25A
36	20.25A	20.25A
37	20.25A	20.25A
38	20.25A	20.25A
39	20.25A	20.25A
40	20.25A	20.25A
41	20.25A	20.25A
42	20.25A	20.25A
43	20.25A	20.25A
44	20.25A	20.25A
45	20.25A	20.25A
46	20.25A	20.25A
47	20.25A	20.25A
48	20.25A	20.25A
49	20.25A	20.25A
50	20.25A	20.25A
51	20.25A	20.25A
52	20.25A	20.25A
53	20.25A	20.25A
54	20.25A	20.25A
55	20.25A	20.25A
56	20.25A	20.25A
57	20.25A	20.25A
58	20.25A	20.25A
59	20.25A	20.25A
60	20.25A	20.25A
61	20.25A	20.25A
62	20.25A	20.25A
63	20.25A	20.25A
64	20.25A	20.25A
65	20.25A	20.25A
66	20.25A	20.25A
67	20.25A	20.25A

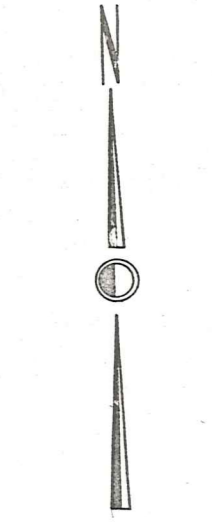
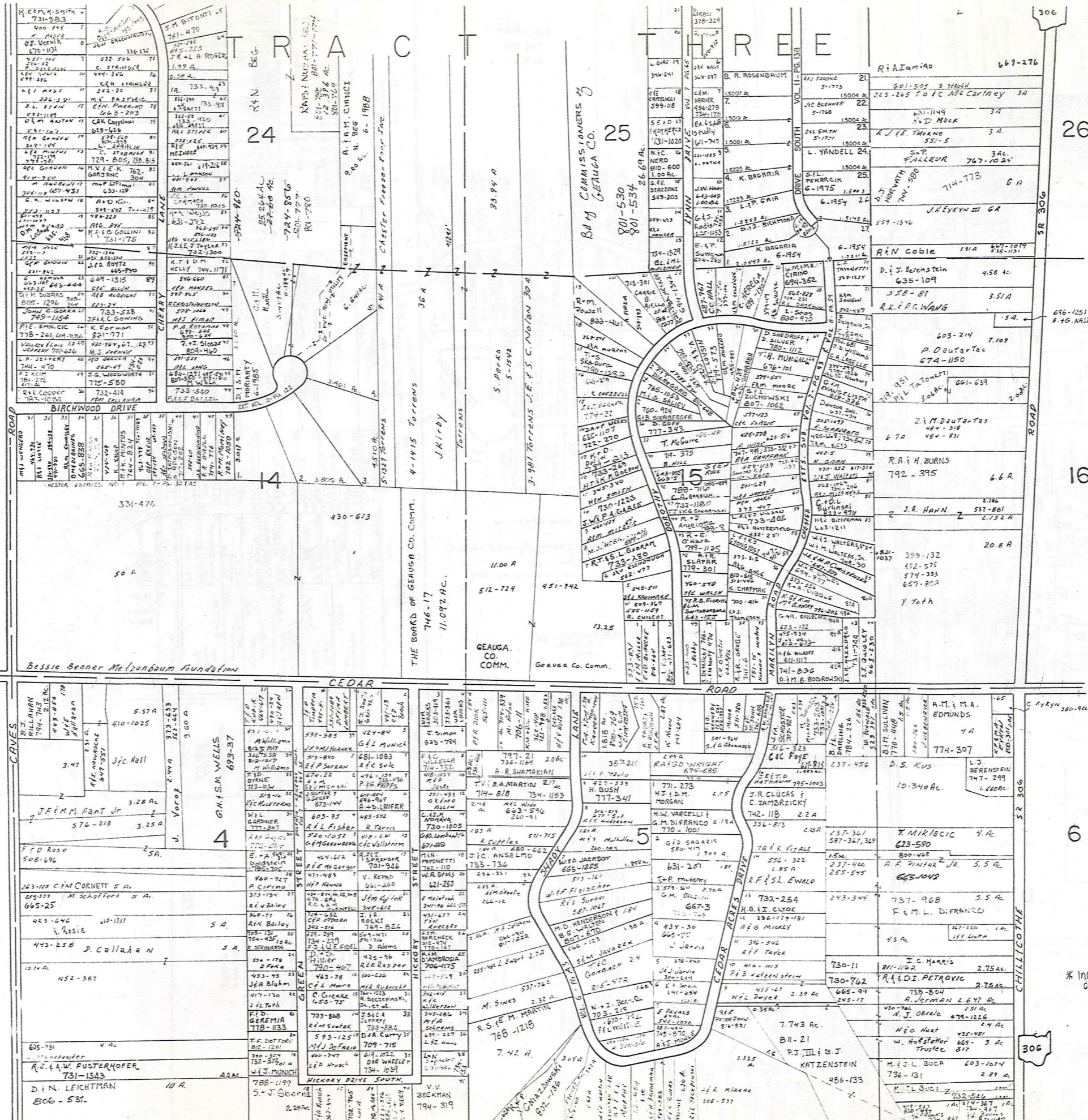
\* Inadequate description

JANUARY 1, 1989  
 RELATIVE REPRESENTATION

A	B	C	D
E	F	G	H
I	J	K	L
M	N	O	P

CHESTERLAND





SCALE 1" = 300'

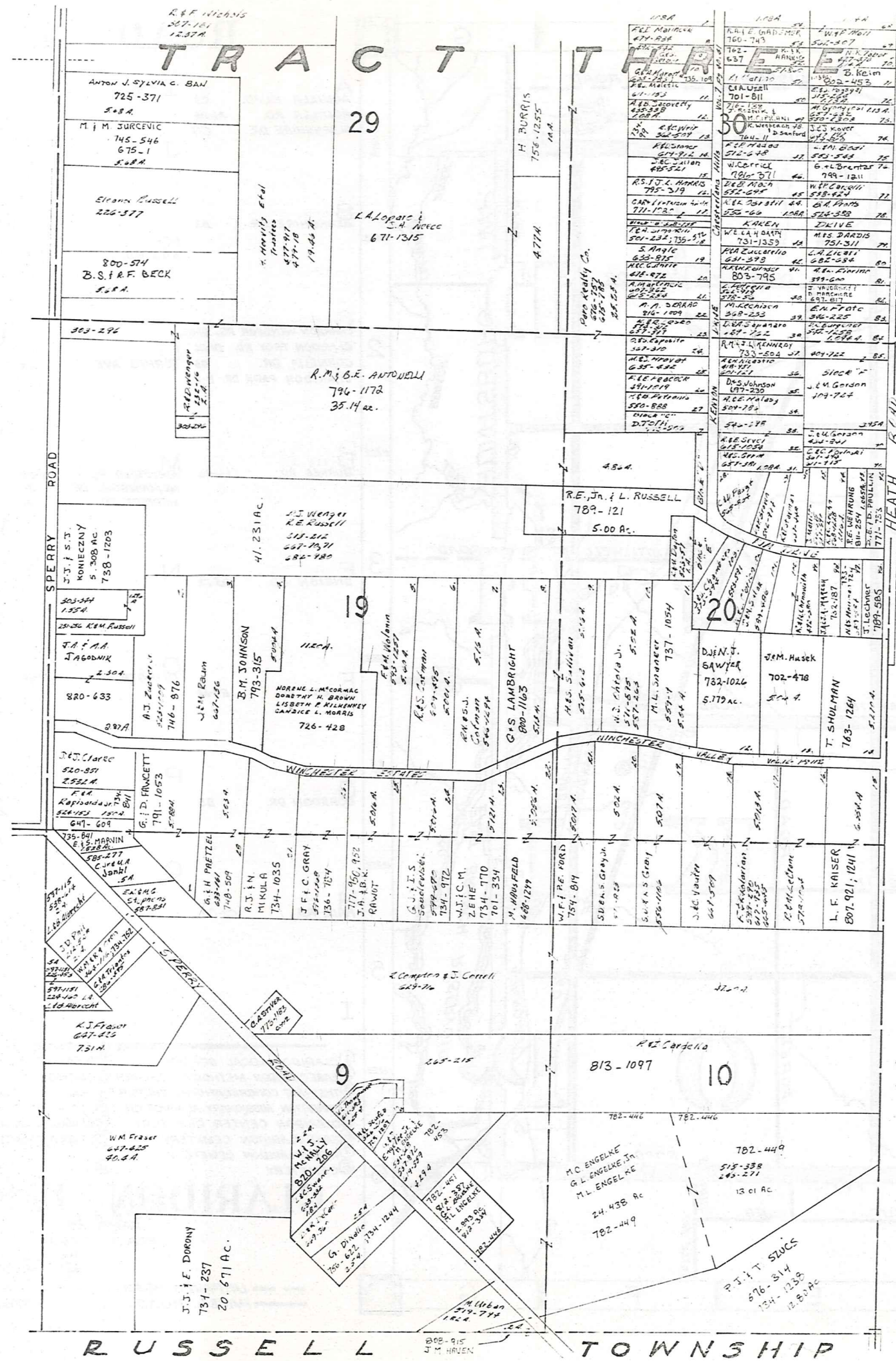
JANUARY 1, 1959  
RELATIVE REPRESENTATION

\* Inadequate description

A	B	C	D
E	F	G	H
I	J	K	L
M	O	P	

CHESTER N





MUNSON TOWNSHIP



SCALE 1" = 300'

JAN 1, 1929

RELATIVE REPRESENTATION

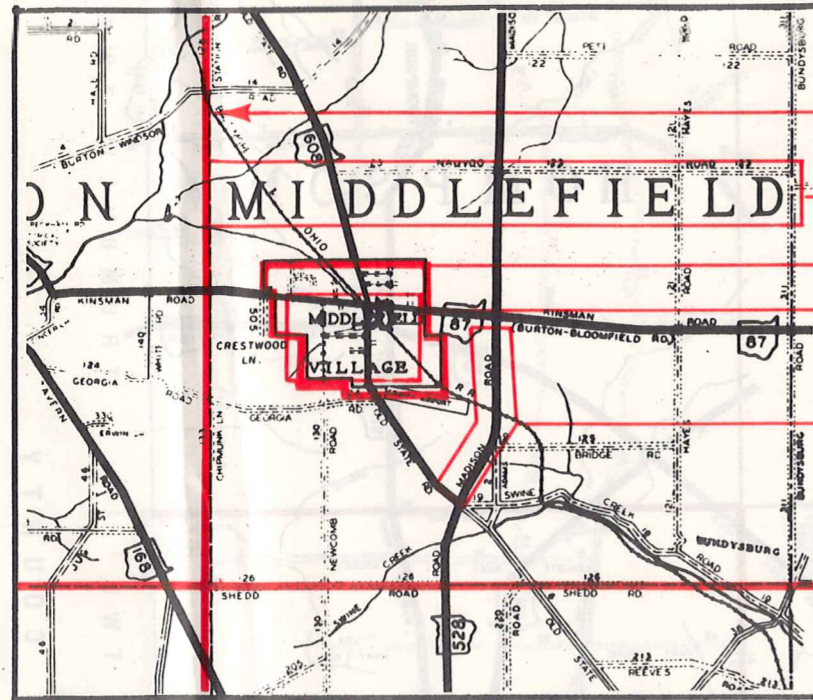
\* Inadequate description

A	B	C	D
E	F	G	H
I	J	K	L
M	N	O	

CHESTER P

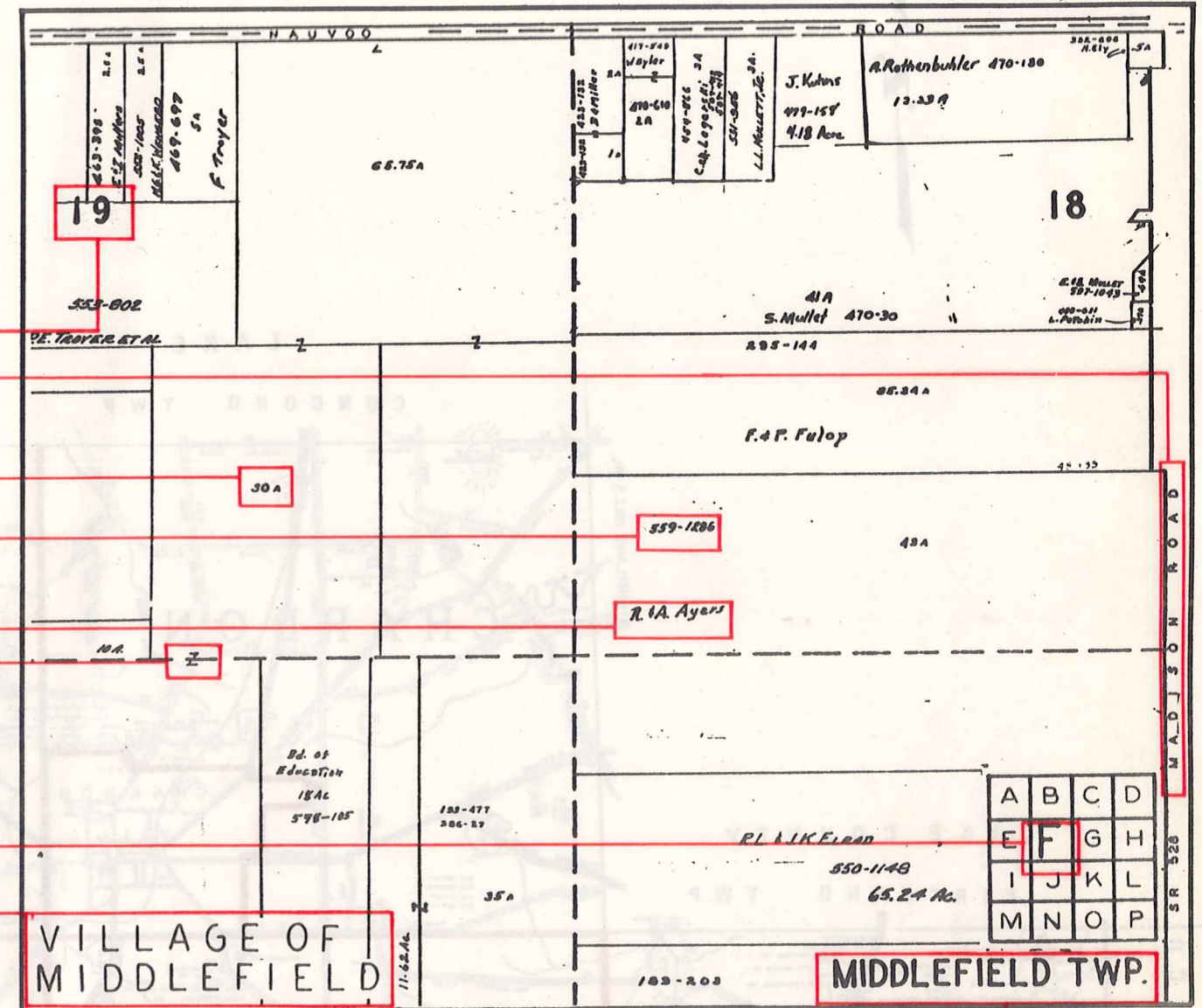
# Explanation and Use Sheet for Geauga County, Ohio

SAMPLE (PARTIAL) COUNTY INDEX MAP



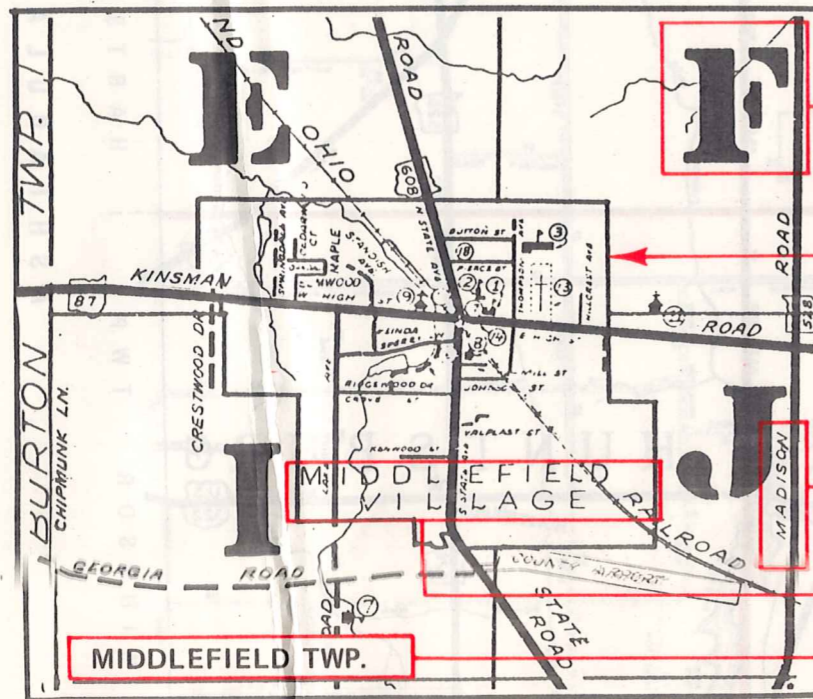
- Township Boundary
- Township Name
- Village Boundary
- Village Name
- Tract Lot Number
- Street Name
- Acreage
- Deed Book & Page
- Owners Name
- Denotes Continous Ownership

SAMPLE (PARTIAL) MAP PAGE



- Map Page Number
- Village Name
- Village Boundary
- Township Name

SAMPLE (PARTIAL) MUNICIPALITY INDEX MAP



- Street Name
- Village Name
- Township Name

## USE OF THE MAP VOLUME

1. LOCATE THE GENERAL AREA OF INTEREST ON THE COUNTY INDEX MAP, ATLAS PAGE 'B', AND NOTE THE MUNICIPALITY NAME (TOWNSHIP OR VILLAGE).
2. REFER TO THE TABLE OF CONTENTS, ATLAS PAGE 'C', AND NOTE THE BEGINNING ATLAS PAGE NUMBER FOR THE MUNICIPALITY OF INTEREST.
3. TURN TO THE PAGE INDICATED. ON THIS PAGE WILL APPEAR AN INDEX MAP FOR THAT MUNICIPALITY.
4. LOCATE THE GENERAL AREA OF INTEREST AND NOTE THE MAP PAGE NUMBER. THIS MAY BE EITHER A LETTER OR A NUMBER.
5. MAP PAGES ARE IN ALPHABETICAL (OR NUMERICAL) SEQUENCE FOLLOWING THE MUNICIPALITY INDEX MAP. FOLLOW SEQUENCE TO THE MAP PAGE INDICATED.
6. LOCATE SPECIFIC PARCEL OF INTEREST AND NOTE THE DESIRED INFORMATION.

NOTE: ON SOME MAPS YOU MAY BE REFERRED TO A DETAIL SHEET SHOWING AN ENLARGEMENT OF THE AREA. THESE MAPS ARE FOUND AT THE END OF THE REGULAR MAP PAGES IN EACH MUNICIPALITY IN EITHER ALPHABETICAL OR NUMERICAL SEQUENCE.

NOTE: CHARDON VILLAGE HAS TITLE SHEETS. TO LOCATE OWNERS NAME, NOTE THE PARCEL NUMBER, REFER TO THE TITLE PAGE FOLLOWING THE MAP OF INTEREST, FOLLOW NUMERICAL SEQUENCE TO THE PARCEL NUMBER OF INTEREST AND NOTE THE DESIRED INFORMATION. IN ALL OTHER MUNICIPALITIES THE OWNERS NAME APPEARS ON THE MAP PAGE.

This book is the property of REAL ESTATE DATA, INC. and is distributed by REDI under a leasing arrangement requiring return to REDI upon termination of the lease. REDI reserves the right to reclaim this book if found in the possession of any firm or person where possession was obtained through any unauthorized source.